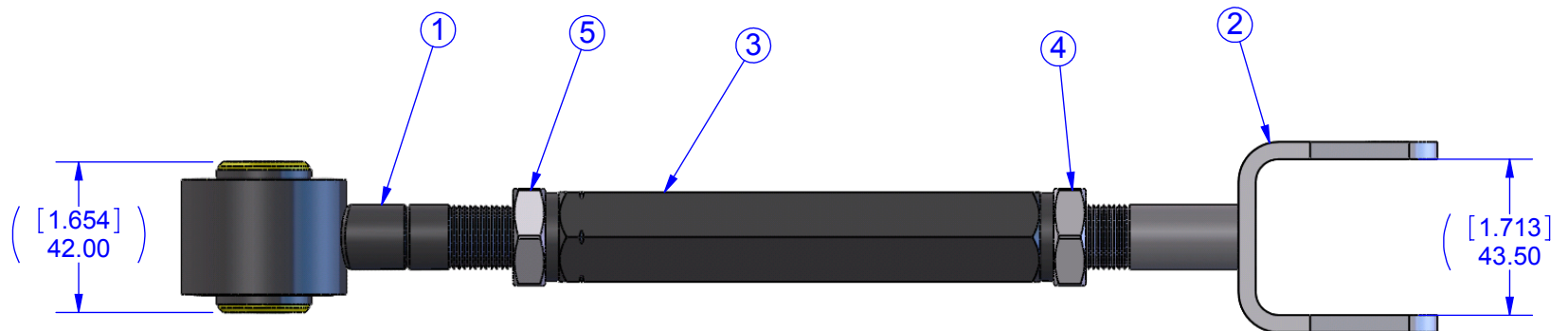
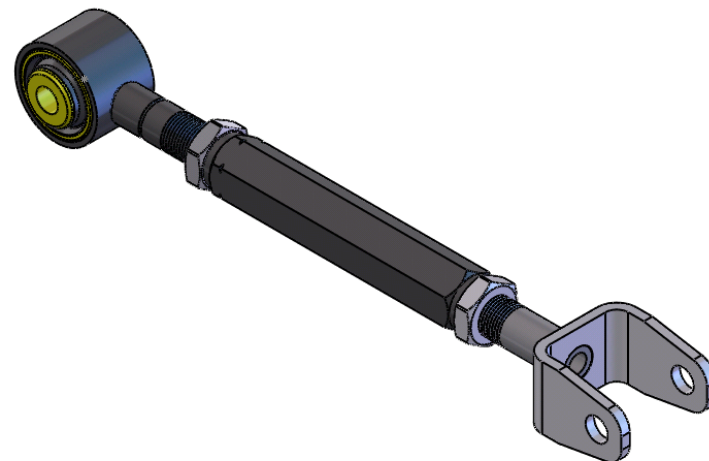


ITEM NO.	QTY.	PART NUMBER	DESCRIPTION
1	1	6701517	LH END
2	1	6701519	RH END WELDMENT
3	1	670101-7	ADJUSTER
4	1	670101-10	JAM NUT, RH M18-1.5
5	1	670101-11	JAM NUT, LH M18-1.5

PART NUMBER IP-348		CONTROL ARM ASSY		
DATE	REV	REVISION HISTORY	DWG	ECN
05/21/09	B	INITIAL RELEASE OF IP	JSP	856



INSPECTION PRINT FOR 670151

THIS DOCUMENT CONTAINS PROPRIETARY INFORMATION WHICH SHALL NOT BE REPRODUCED, TRANSFERRED TO OTHER DOCUMENTS, DISCLOSED TO OTHERS, USED FOR MANUFACTURING OR ANY OTHER PURPOSE WITHOUT PRIOR WRITTEN PERMISSION FROM SPECIALTY PRODUCTS COMPANY.

UNDIMENSIONED FEATURES ARE ± 0.5 MM UNLESS OTHERWISE SPECIFIED DIMENSIONS AND TOLERANCES ARE IN MILLIMETERS AND DECIMAL DEGREES: X ± 1.5 , X.X ± 0.70 , X.XX ± 0.25 , ANGLES $\pm 2.0^\circ$ CONFORMS TO ASME Y14.5M-1994



Specialty Products Company™
Longmont, CO 80504

IP-348 CONTROL ARM ASSY

SCALE 1:2	DO NOT SCALE DRAWING	CONTRACT	CHECKED CCH	DRAWN DHH	SIZE A	DATE 08/18/08	REV B	SHEET 1 OF 1
-----------	----------------------	----------	-------------	-----------	--------	---------------	-------	--------------