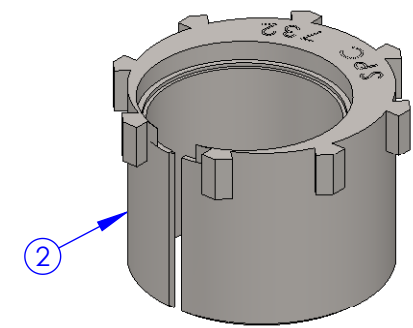
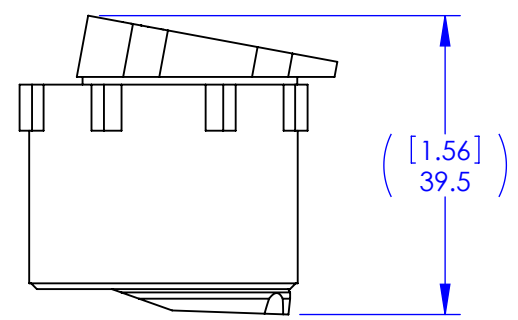
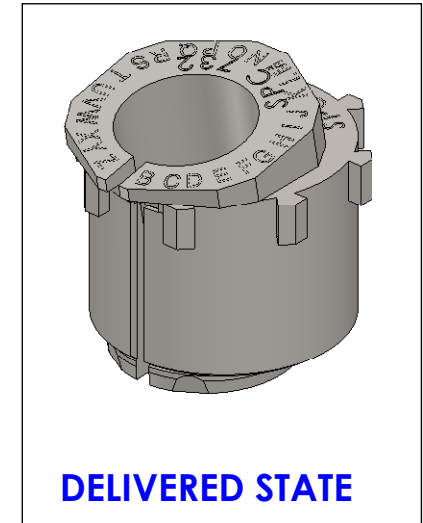
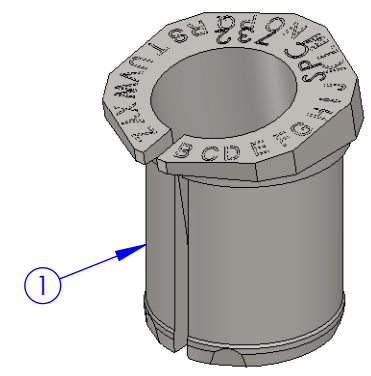
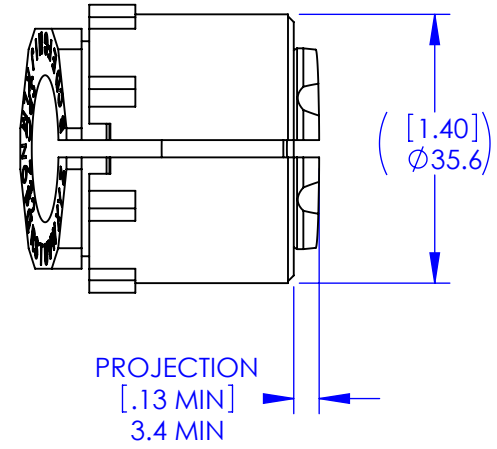
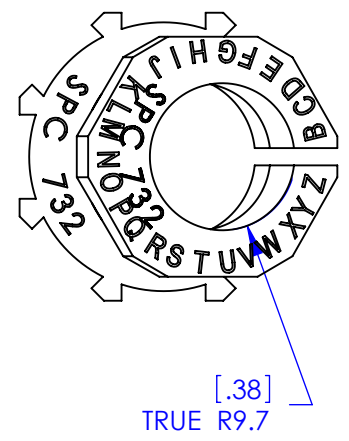


ITEM	QTY	PART NO.	DESCRIPTION
1	1	7322	Sleeve, Adjustable - Inner half
2	1	7323	Sleeve, Adjustable - Outer half

7321 Assembly, Truck Sleeve - Adjustable				
DATE	REV	REVISION COMMENTS	BY	ECN
08/25/03	A	NHA 24130 EAS 732	---	0
11 May 11	B	Updated Sht Blk; Part converted from 2D to 3D; Notes removed; views altered and iso-view added; some tol changes.	RAH	1080

NOTES:  
 1. Press item 1 into item 2 with slots aligned +/- 2° and until fully engaged with minimum protrusion dimension shown

**This drawing may be used for Receiving Inspection**



INTERPRET & PROCESS  
per MSS-4.000



**Specialty Products Company**  
 Longmont, Colorado USA • www.specprod.com

**7321 Assembly, Truck Sleeve - Adjustable**

<b>PROPRIETARY AND CONFIDENTIAL</b> THIS DOCUMENT CONTAINS PROPRIETARY INFORMATION WHICH SHALL NOT BE REPRODUCED, TRANSFERRED TO OTHER DOCUMENTS, DISCLOSED TO OTHERS, USED FOR MANUFACTURING, OR ANY OTHER PURPOSE WITHOUT PRIOR WRITTEN PERMISSION FROM SPECIALTY PRODUCTS COMPANY	<b>DO NOT SCALE DRAWING</b> UNDIMENSIONED FEATURES ARE CONSIDERED NOMINAL AT 3D MODEL SURFACES WITH TOLERANCE ±0.50mm[0.020"]	CONFORMS TO ASME Y 14.5M 1994 LINEAR mm[in] ANGLE (deg.) None±1.00 [X ±.040"] None± 2.0° X ±0.50 [XX ±.020"] X ± 1.0° .XX ±0.25 [XXX±.010"] .XX ± 0.5°	DRAWN: JLB	MATERIAL: See Components	Rev. <b>B</b>
			DATE: 11/18/02	OPT.MAT'L:	
			CHECKED: ---	FINISH: See Components	