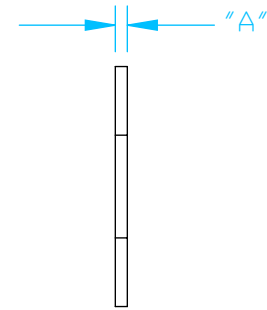
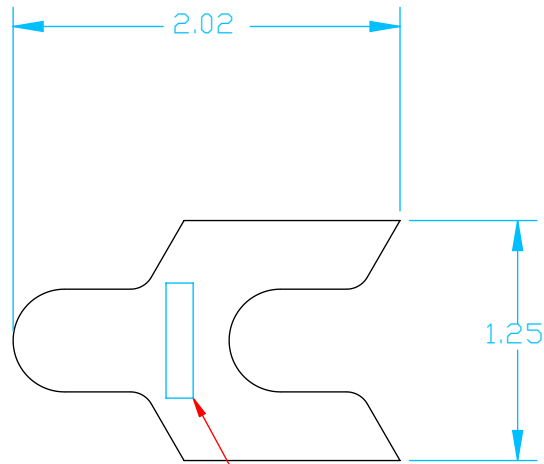


PART NO.	DIM "A"	"ID"
477651	28 GAGE (0.015)	CT164
477661	22 GAGE (0.030)	CT132
477671	16 GAGE (0.060)	CT116
477681	11 GAGE (0.120)	CT018
477691	3/16" (0.187)	CT316

477651-477691

SLA SHIM



FINISH: CLEAR ZINC

SPECIALTY PRODUCTS COMPANY

477651-477691

SLA SHIM

SHEET 1 OF 1  
REV. B

**FOR RECEIVING-INSPECTION USE**