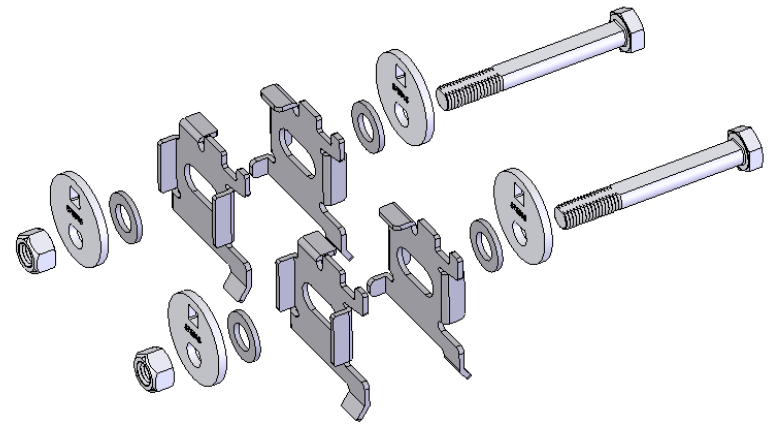
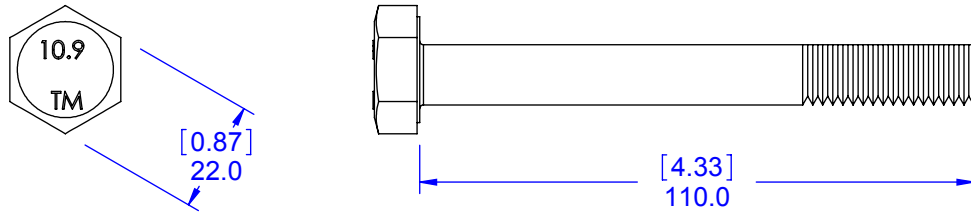
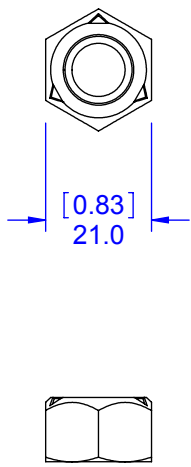


THIS SHEET FOR RECEIVING INSPECTION USE ONLY

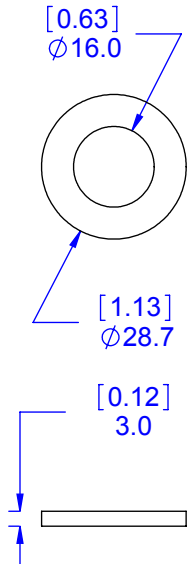
ITEM 3 - QTY 2



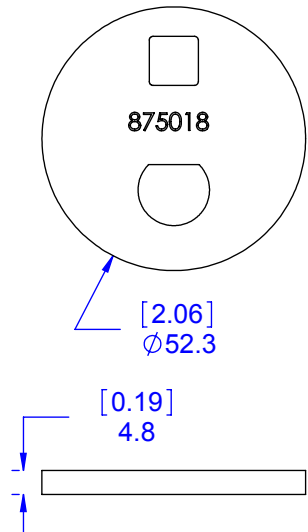
ITEM 5 - QTY 2



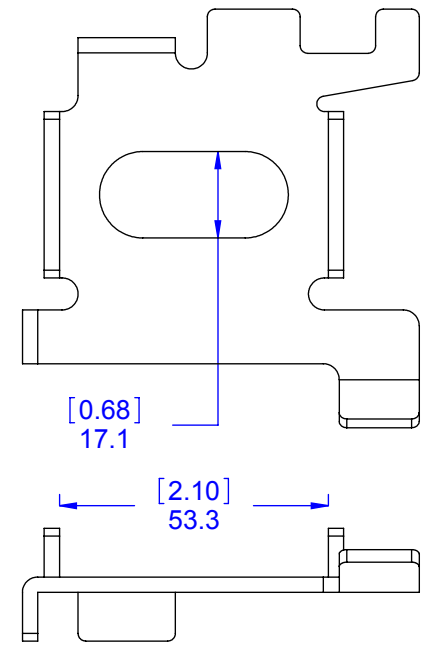
ITEM 6 - QTY 4



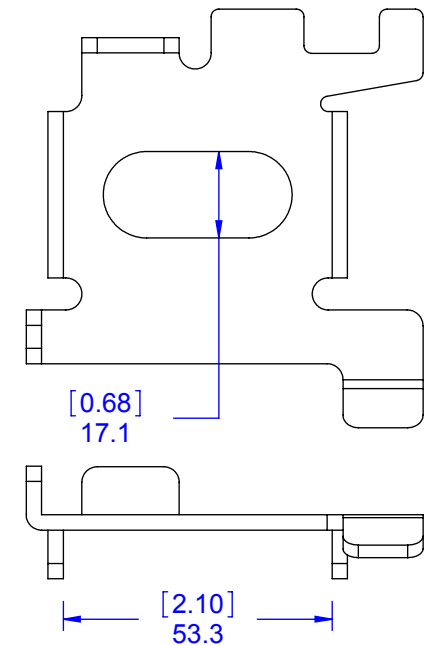
ITEM 4 - QTY 4



ITEM 2 - QTY 2



ITEM 1 - QTY 2



THIS DOCUMENT CONTAINS PROPRIETARY INFORMATION WHICH SHALL NOT BE REPRODUCED, TRANSFERRED TO OTHER DOCUMENTS, DISCLOSED TO OTHERS, USED FOR MANUFACTURING OR ANY OTHER PURPOSE WITHOUT PRIOR WRITTEN PERMISSION FROM SPECIALTY PRODUCTS COMPANY.

UNDIMENSIONED FEATURES ARE ±0.5MM UNLESS OTHERWISE SPECIFIED DIMENSIONS AND TOLERANCES ARE IN MILLIMETERS AND DECIMAL DEGREES: X ±1, X.X ±0.5, X.XX ±0.25, ANGLES ±2.0° CONFORMS TO ASME Y14.5M-1994

 **Specialty Products Company™**
Longmont, CO 80504

23755 CAMBER/CASTER KIT